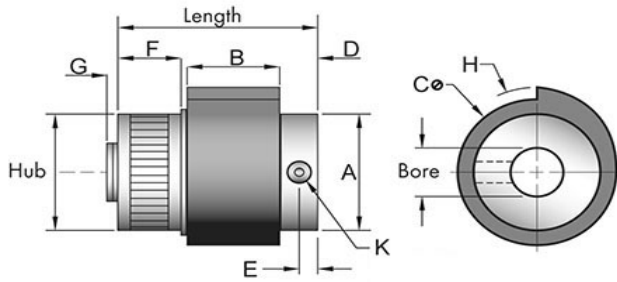
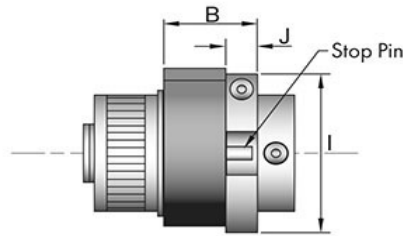


SP40



STANDARD MODEL



ADJUSTING COLLAR OR
OVERTRAVEL STOP

Tiny-Clutch SP40 SP-Series Wrap Spring Clutch

Specifications:		Options:	
Max Torque	5 in/lbs	Bore	1/8", 3/16", 3mm, 4mm, 5mm
Length	0.78 in	Mounting	Set Screw, CrossHole,
Hub	0.50 in		Set Screw & Cross Hole
Dimension A	0.56 in	Drive	Clockwise, Counter Clockwise
Dimension B	0.38 in	Input	Hub, Shaft
Dimension C	0.61 in	Function	Overrunning *, On-Off **, Indexing **
Dimension D	0.16 in	# of Trip Lugs	0, 1, 2, 3, 4, 5, 6, 8 Lugs
Dimension E	0.08 in	Hub Type	Knurled Drum, Plain Drum
Dimension F	0.20 in	Add-Ons	Adjusting Clamp ***
Dimension G	0.06 in		Over-Travel Stop ***
Dimension H	0.35 in		
Dimension I	0.75 in		
Dimension J	0.14 in		

* Requires 0 Lugs ** Requires 1 or more Lugs *** Only available with indexing

Tiny-Clutch | Helander Products, Inc.