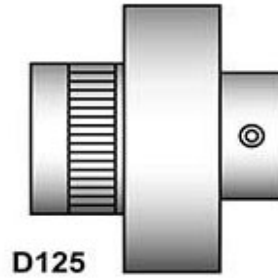
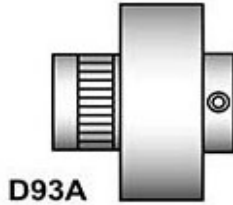
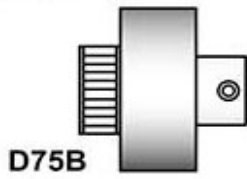
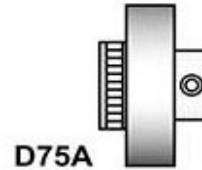
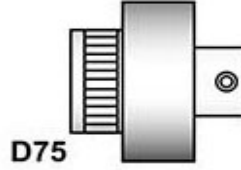
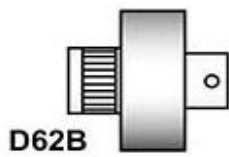
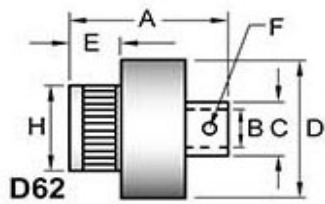


D62



Tiny-Clutch D62 D-Series Roller Clutch

Specifications:		Options:	
Max Torque	5 in/lbs	Bore	1/8", 3/16", 1/4", 3mm, 4mm, 5mm
Max Speed	7000 rpm		6mm
Dimension A	0.84 in	Mounting	Set Screw, CrossHole
Dimension C	0.31 in		Set Screw & Cross Hole
Dimension D	0.81 in	Drive	Clockwise, Counter Clockwise
Dimension E	0.28 in		
Dimension H	0.500 in		
	0.498 in		

Tiny-Clutch | Helander Products, Inc.

www.TinyClutch.com

TinyClutch@HelanderProducts.com

860.669.7953